

'Impact of deficit policy on Employment, Learning and Skills in Halton' – an overview April 2010 to April 2011

Produced by HBC's Research & Intelligence unit: research@halton.gov.uk



Working age people claiming an out-of-work benefit



Working age people economically inactive or unemployed



More business deaths than business births in 2009



Deficit in pay for Halton residents from people working in Halton

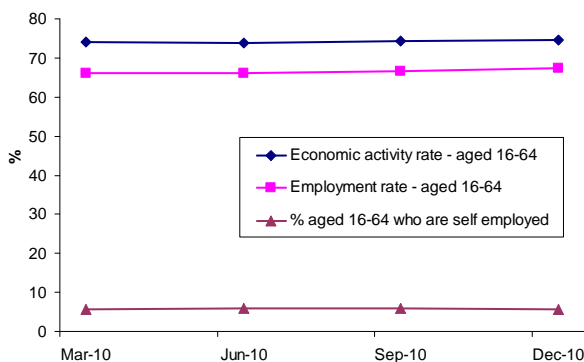
Business Demography, Earnings and Housing Market

Headlines

- Economic activity, employment rate and self-employment rate all remained steady in 2010
- Business deaths overtook business births for the first time in 2009
- People who work in Halton continue to earn above the North West average.

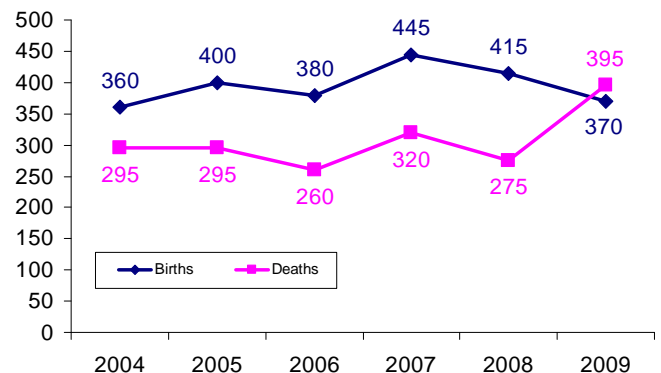
- People who live in Halton (but don't necessarily work in Halton) continue to earn below the North West average.
- Halton's average house price has steadily decreased from Q2 2010 to Q1 2011 and remains below regional and national figures

Employment



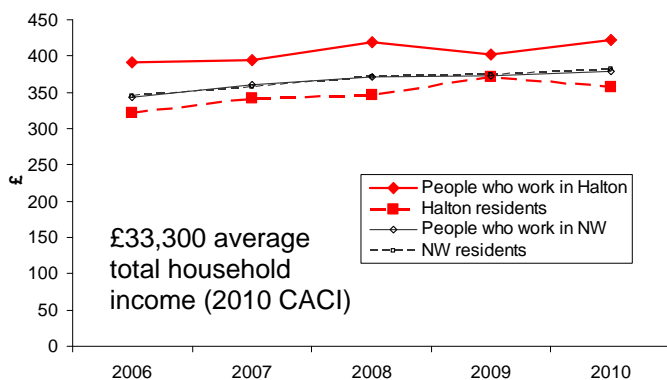
Source: NOMIS, Mar 10 to Dec 10

Business Births and Deaths



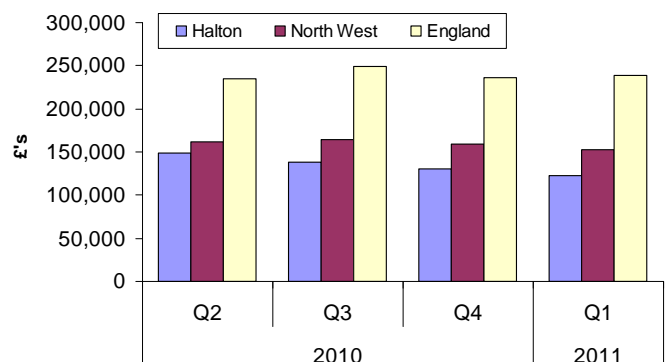
Source: ONS, 2004 to 2009

Median weekly earnings



Source: ONS, 2006-2010

Average House Price



Source: DCLG, 2010/11

Unemployment

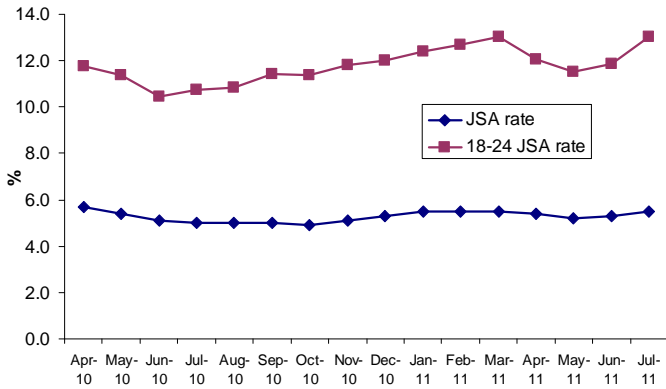
Headlines

- JSA claimant rate fallen slightly from 5.7% to 5.5%
- Youth unemployment remains much higher at about 13%
- 1 in 5 people claim an out-of-work benefit
- True reflection of worklessness shows 1 in 3

people of working age as economically inactive (student, looking after family, sick, retired) or unemployed

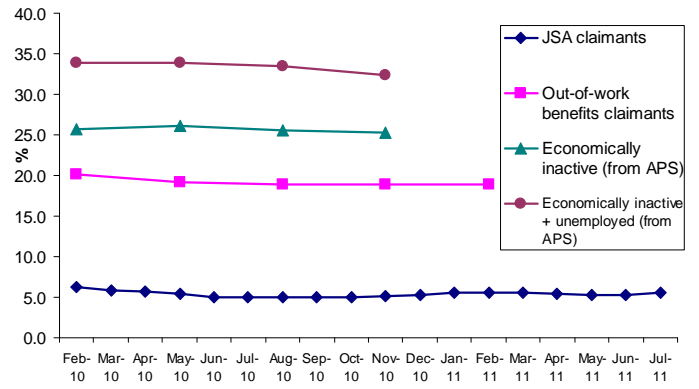
- Elementary occupations remain most sought
- Falling rate of NEET's (10.2% to 9.3%)
- Spike of redundancies in Jun-10 (DHL Runcorn)

Unemployment and Youth Unemployment rate



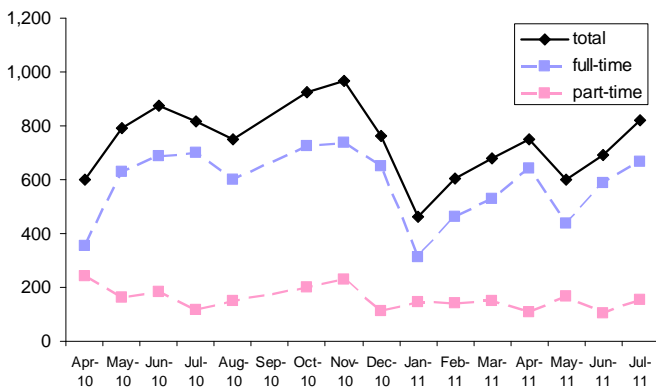
Source: ONS, Apr 2010 to Jul 2011

Worklessness breakdown



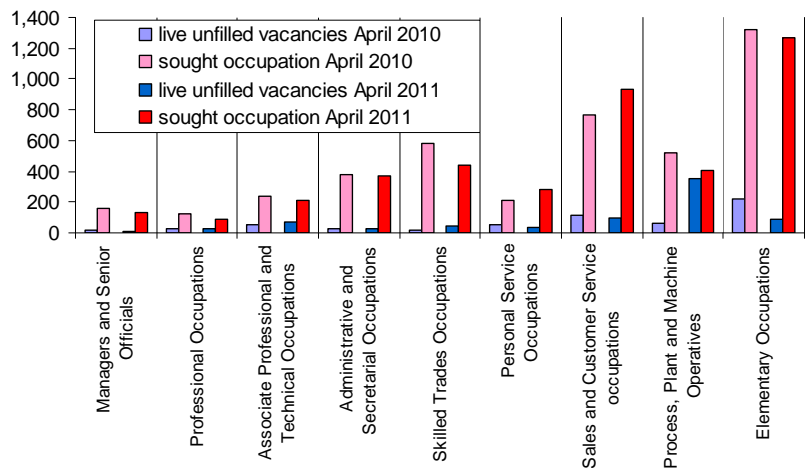
Source: ONS, Feb 2010 to Jul 2011

No. of vacancies in Halton



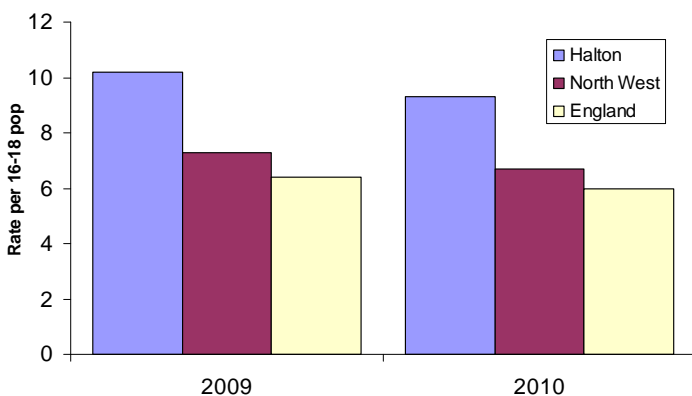
Source: NOMIS, Apr 2010 to Jul 2011

job vacancies v sought occupation



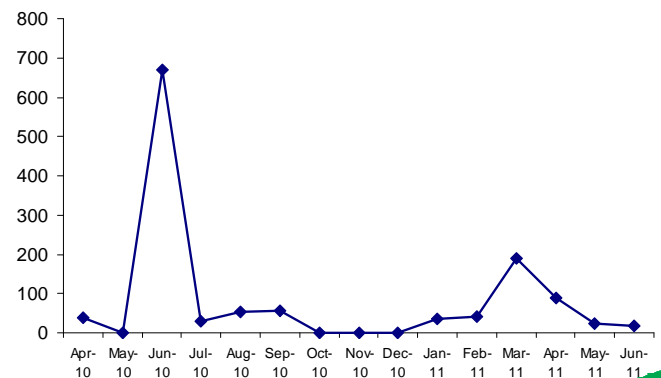
Source: NOMIS, Apr 2010 and Apr 2011

16-18's Not in Employment, Education or Training



Source: Connexions, 2009 (Ave Nov 09, Dec 09, Jan 10) to 2010 (Ave Nov 10, Dec 10, Jan 11)

Redundancies in Halton



Source: JobCentre Plus

